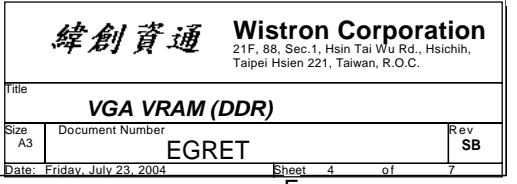
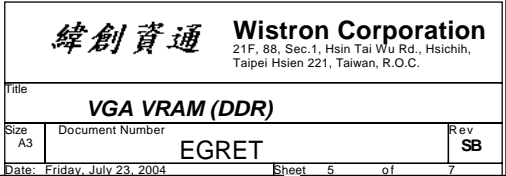


PIN D14 connect
page 5

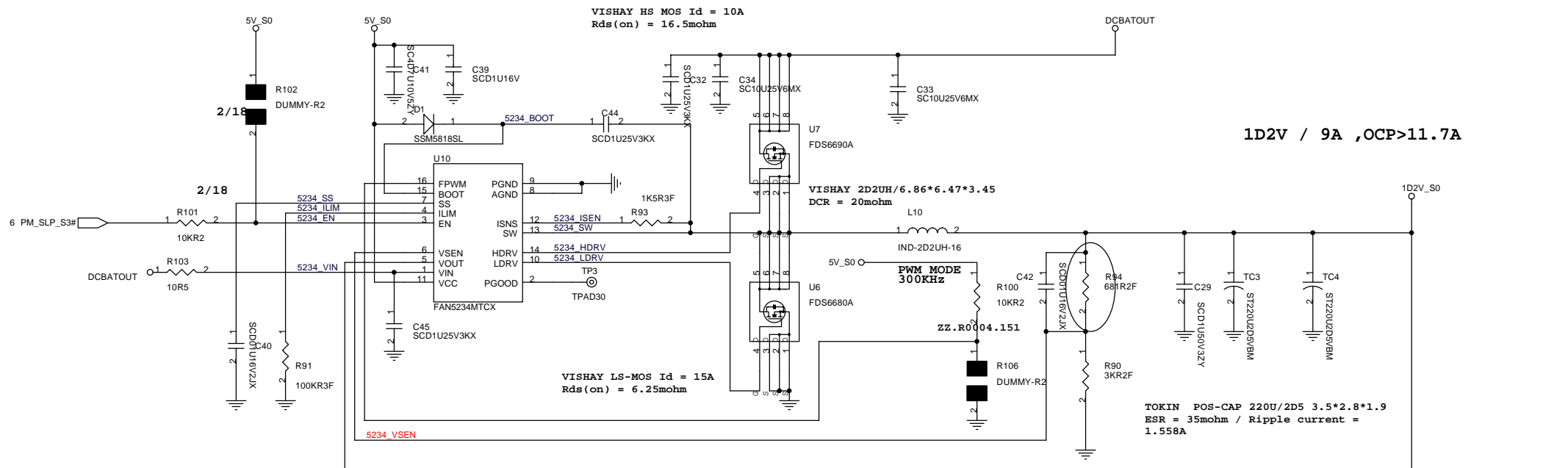
Place close
to the GPU





FAN5234 FOR 1D2V

1D2V_S0 : 9Amax , OCP>11.7A



FOR NV18M R29 = 1KR2F Vout = 1.2V; CORE
FOR NV36MVR29 = 681R2F Vout = 1.1V;AGP
Vout=0.9*(1+R29/R31) if Q2 on